



Asset Management System



The core of asset management is a computerized asset registry that establishes database records for each asset and each asset component, and which utilizes technology and processes to maintain the integrity of asset accountability and financial data.

SmartTraxx is enterprise-class asset registry software that manages assets and the movement, maintenance and maturation of assets over time. SmartTraxx registers each asset, manages inspections, maintenance and warranties, and tracks locations through bar coding and RFID technologies.

- Register assets and asset components
- Calculate valuations and depreciation
- Monitor inspections and maintenance
- Track status and movement of assets
- Provide security and prevent shrinkage



A SIGNIFICANT PERCENTAGE OF ASSETS ARE OFTEN FOUND TO BE MISSING DURING YEAR-OVER-YEAR INVENTORIES. EXCESSIVE INVESTMENT IN ASSETS IS COMMONPLACE DUE TO INADEQUATE VISIBILITY OF ASSETS, THEIR LOCATIONS AND STATUS.

PAPER-BASED AND SPREADSHEET BUSINESS PROCESSES ACROSS DIVERSE OPERATIONS MAKE IT DIFFICULT ACCOUNT FOR ASSET LOCATIONS, STATUS AND VALUATION.

SMARTTRAXX ENABLES MANAGEMENT OF UNLIMITED ASSET CLASSIFICATIONS, INCLUDING 'REAL TIME' LOCATION TRACKING AND STATUS MANAGEMENT.

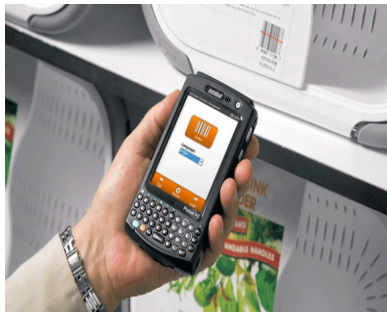
- Planning and Acquisition
- Operation and Service Delivery
- Maintenance & Useful Life Extension
- Valuation and Financial Data Integrity
- Status Control and Disposal

Asset Tracking Technologies

Assets can be monitored with intuitive software screens, including the ability to track the location, status and disposition of assets. Bar code or UHF tags can be placed on assets to automate and streamline asset identification and tracking utilizing portable and networked detectors.

Bar Coding

Tagging assets with bar codes enables rapid processing, more accurate data input and simplified reconciliations. USB scanners track assets and portable scanners are used to track assets to locations and audit assets.



UHF RFID

UHF RFID provides the additional ability to track assets through the use of network-connected antennas for 'real time' location awareness. Portable scanner inventories are simplified with long range scans and assets can be found



Active RFID

Whereas bar coding is very close proximity technology, and UHF RFID tracks at specific physical spaces, Active RFID has ranges from inches to approximately 1,500'. Assets can be tracked to any zone circumference for real-time visibility.



Portable Scanners

Portable scanners enable close proximity bar code scans, UHF RFID scans up to approximately 20' and Active RFID scans in excess of 1,000'. Portable scanners enable scanning of storage location tags and asset tags to update the database with exact asset locations. Assets can be rapidly inventoried in storage or at current locations. Missing assets can be found and located within inches.

Network Scanners

UHF RFID enables saturation of zones of approximately 10' by 10', to track any assets that pass through the zone, such as a doorway or along a passageway. Active RFID zones can be circumferences up to approximately 1,500' and can be sized for location granularity. Each UHF or Active RFID zone is named in the database as a specific location, and asset locations automatically update the database.

Each time asset or staff RFID tags are identified at a detection zone, the SmartTraxx database reconciles the RFID tag data against business rules, and RFID detection zones can trigger alarms, flashing lights and video cameras to ensure that assets are not moved or removed from premises in an unauthorized manner. SMS text message and emails alerts can automatically route to designated recipients.



SmartTraxx Asset Management Software

SmartTraxx is J2EE/J2SE enterprise-class database management software optimized for asset management, and is customized for each customer through collaborative requirements analysis. The database supports parent/child relationships to manage assets and asset components. SmartTraxx keeps track of the locations and status of assets, while automating inspection and maintenance cycles, status and valuations and a rigorous chain-of-custody event history.

A single instance of SmartTraxx supports unlimited data views for registration and management of different asset types and classifications, with unique data fields, workflow and reporting for each data view. Track asset locations, asset assignments and returns, and duty cycles. Checking out assets allows assignment of custody to an employee or any recipient. Checking in assets releases end user responsibility and allows the assets to be reallocated throughout the organization.

SmartTraxx can import data from purchasing or other host systems, and can export data to ERP or other host systems. SmartTraxx is available as a hosted 'cloud' solution or can be installed on local server(s). Windows and Linux operating systems and SQL-SVR or MySQL databases are supported.

Features and Benefits

- ▶ Parent/child database schema
- ▶ Attach asset photos to database
- ▶ Import new asset records from host(s)
- ▶ Export asset data to host system(s)
- ▶ Prints RFID and bar code asset labels
- ▶ Attach key documents as digital copies
- ▶ Unlimited reports and reporting
- ▶ Track with radio waves or bar codes
- ▶ Maintains status from acquisition to disposal
- ▶ Automate inspection schedules
- ▶ Track maintenance events
- ▶ Automate maintenance agreement cycles
- ▶ Prevent unauthorized asset movements
- ▶ Manages asset statuses and valuations

Asset Management Software

VirtualDoxx - test-data.virtualdoxx.com

Project Summary | E-Forms | Data Entry | Spreadsheet | Search Database | Tracking

Single E-form

Please enter Variable data values for each field below

#	Field Name	Value	Example						
	*Location	AssetHome	AssetHome						
1	*Vendor		Patterson Pope						
2	Vendor ID#		10-101						
3	*Vendor Order#		10-00001						
4	Purchase Date	07/09/10							
5	Cost	1000.00							
#	Field:	6	7	8	9	10	11	12	13
Example:	*Manufacturer	*Brand Name	*Model	*Serial #	*Description	*Department	*Maintenance Agreement	*Maintenance #	
	Spacesaver	Eclipse	Elite 750	1234567890	Laptop Computer Sales		Y	06/10/10	
							<input type="checkbox"/>		
							<input type="checkbox"/>		
							<input type="checkbox"/>		
							<input type="checkbox"/>		
							<input type="checkbox"/>		
							<input type="checkbox"/>		
							<input type="checkbox"/>		
							<input type="checkbox"/>		
							<input type="checkbox"/>		
							<input type="checkbox"/>		
							<input type="checkbox"/>		

Notes

Insert into Spreadsheet at Row

Taskbar: Start, OpenOffice.org, Firefox, Skype™ - eric.doyle..., Java Console - Virtu..., VirtualDoxx - test..., 1:55 PM

Unlimited Data Views with Single Database Instance

Available Hosted or on Local Server

Open Software and Microsoft SharePoint Platforms

Commercial Off-the-Shelf Software Configured for each Customer



www.virtualdoxx.com

sales@virtualdoxx.com